

# SPECIFICATION

**MODEL: B13002- MIPI\_CSI-2**

**PART NO:** \_\_\_\_\_

**VERSION:** V1.00

Approver		Check	Design
GM	PM		

Customer Confirm

---

---

# Content

1	Software Register .....	3
2	User Interface .....	6
3	Operating Instructions .....	9

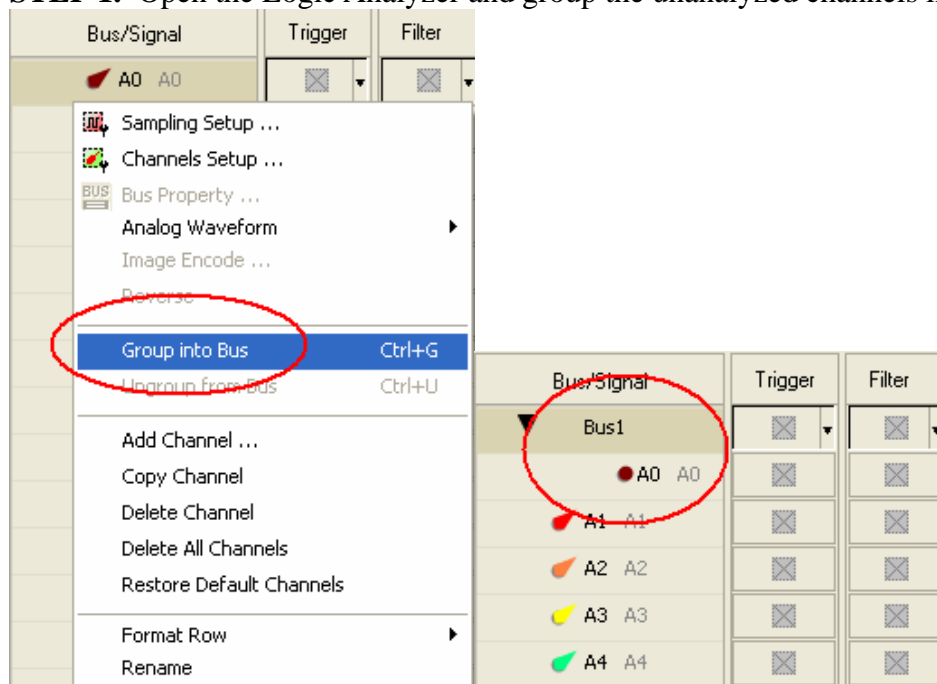
# 1 Software Register

Please register the software as the following steps:

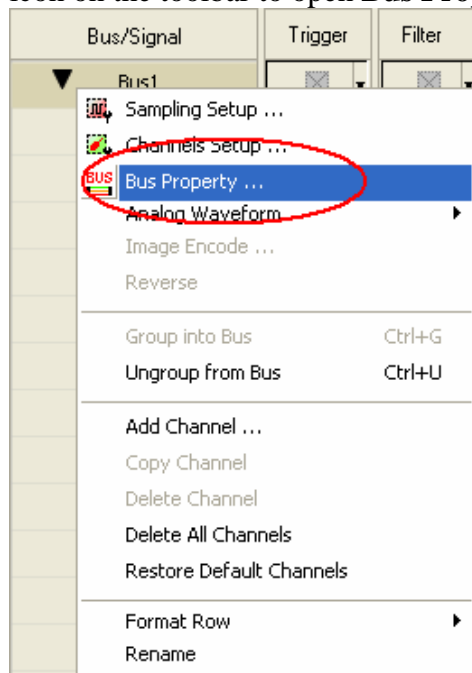
※ Remark1: The registration steps for all protocol analyzers are the same; you can complete the registration by following procedures. Following is an example on how to register the Protocol Analyzer BUS.

※ Remark2: We won't have additional notice for you, when there is any modification of the module specification. If there is some unconformity caused by the module version upgrade, users should take the module software as the standard.

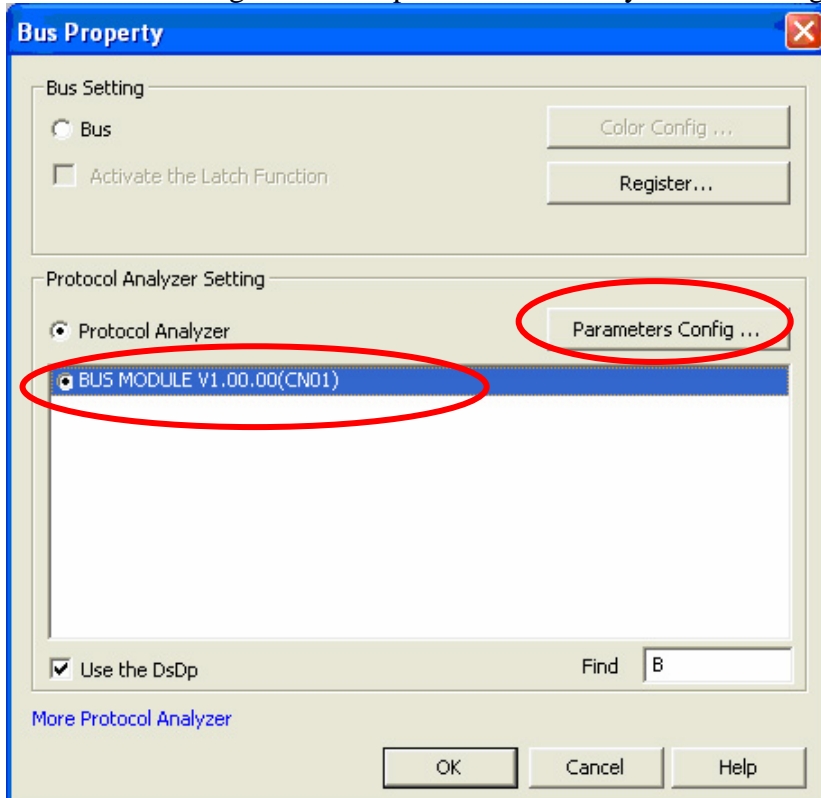
**STEP 1.** Open the Logic Analyzer and group the unanalyzed channels into **Bus1** by pressing the **Right Key**.



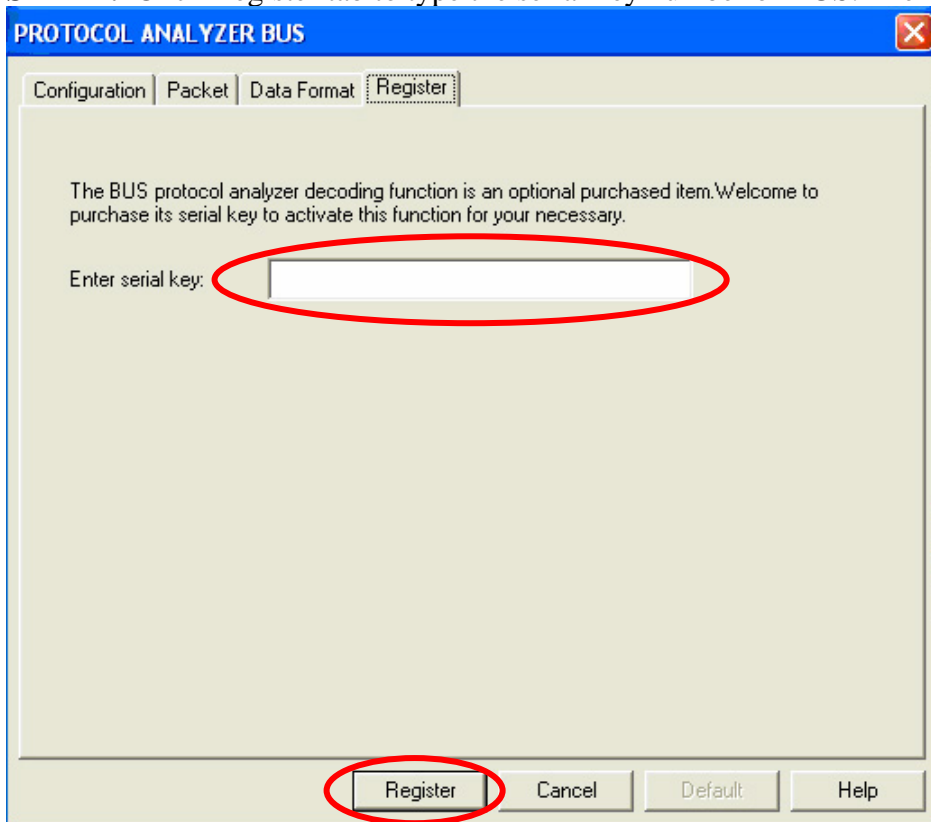
**STEP 2.** Select **Bus 1**, then press **Right Key** on the mouse to list the menu, then click **Bus Property** or **Bus** icon on the toolbar to open **Bus Property** dialog box.



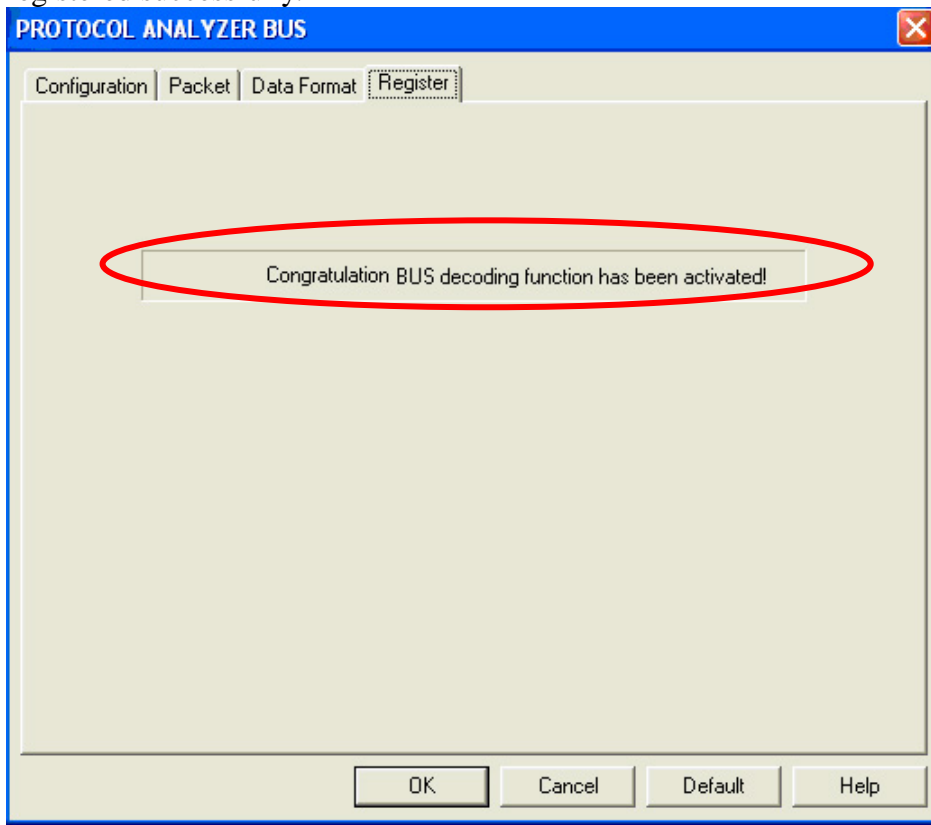
**STEP 3.** Select the Protocol Analyzer, and then choose **BUS MODULE V1.00.00 (CN01)**. Next click Parameters Configuration to open Protocol Analyzer Bus dialog box.



**STEP 4.** Click Register tab to type the serial key number of BUS. Then click Register.



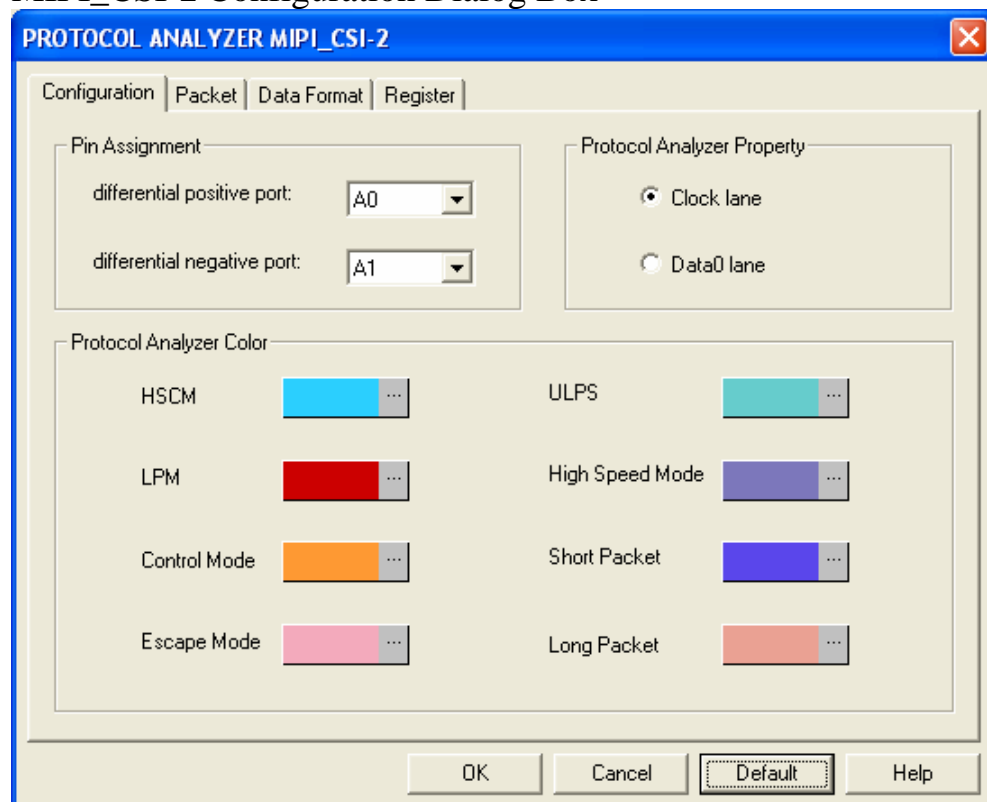
**STEP 5.** After clicking the Register button, following dialog box will appear, it denotes that the BUS has been registered successfully.



## 2 User Interface

In the configuration, please refer to the below images to select options of setting MIPI\_CSI-2 module.

### MIPI\_CSI-2 Configuration Dialog Box

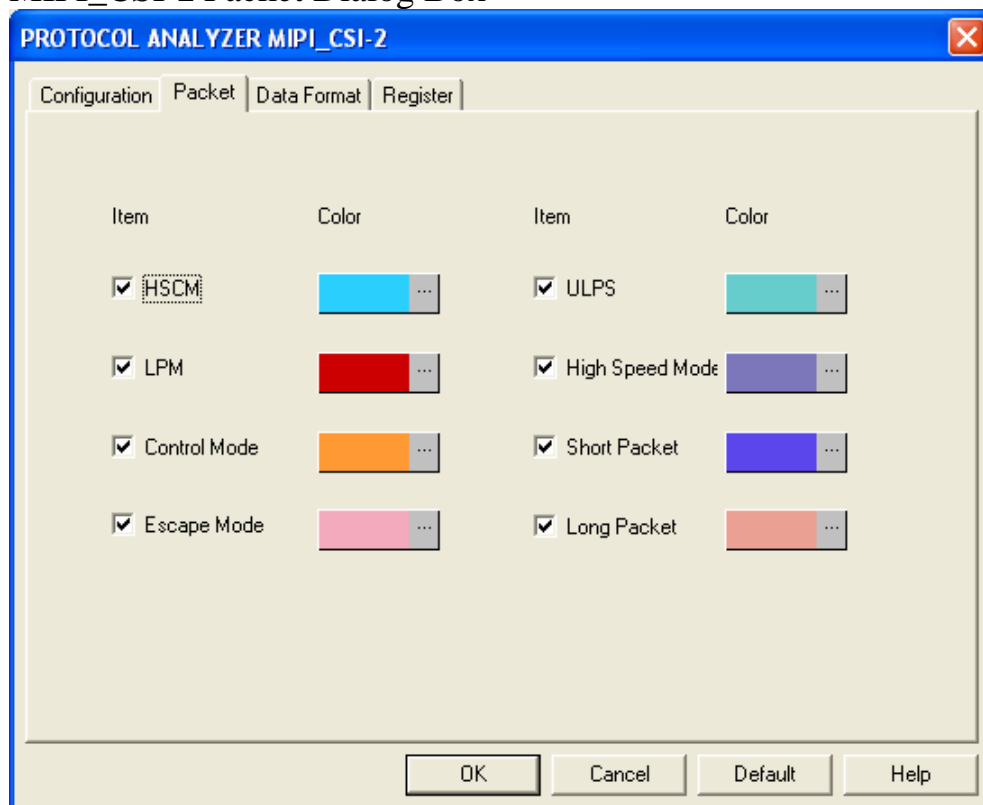


**Pin Assignment:** Set the channels for differential positive port and differential negative port.

**Protocol Analyzer Property:** Clock lane and Data0 lane could be selected.

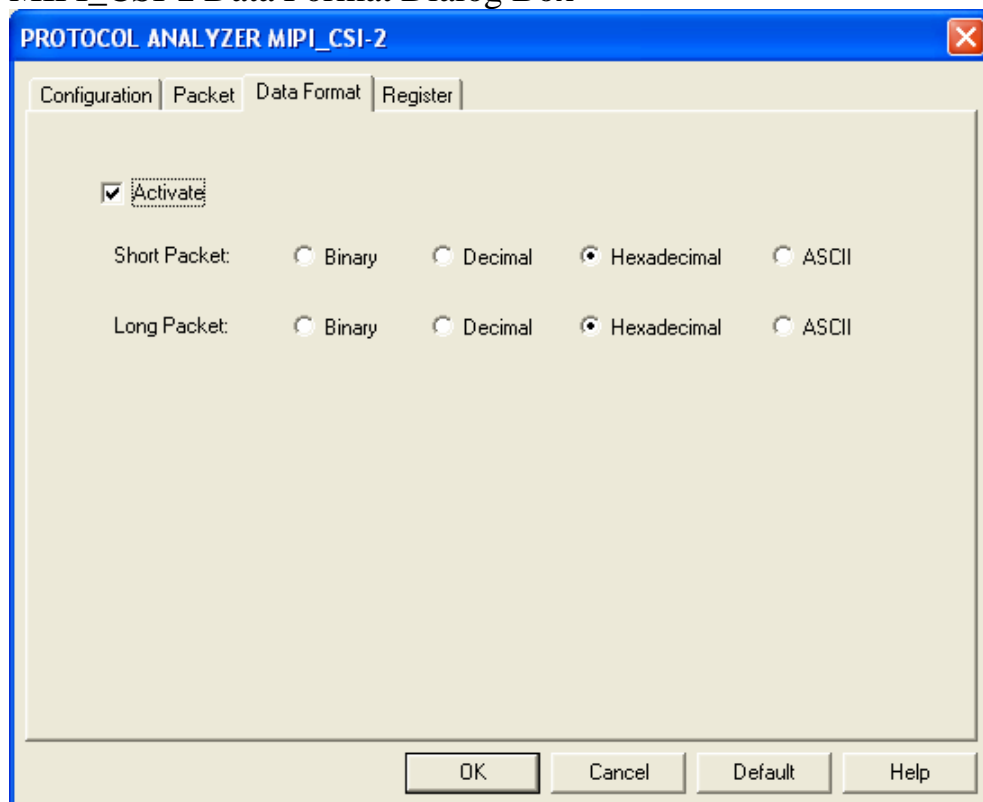
**Protocol Analyzer Color:** Set the displayed color for every packet in the Protocol Analyzer.

## MIPI\_CSI-2 Packet Dialog Box



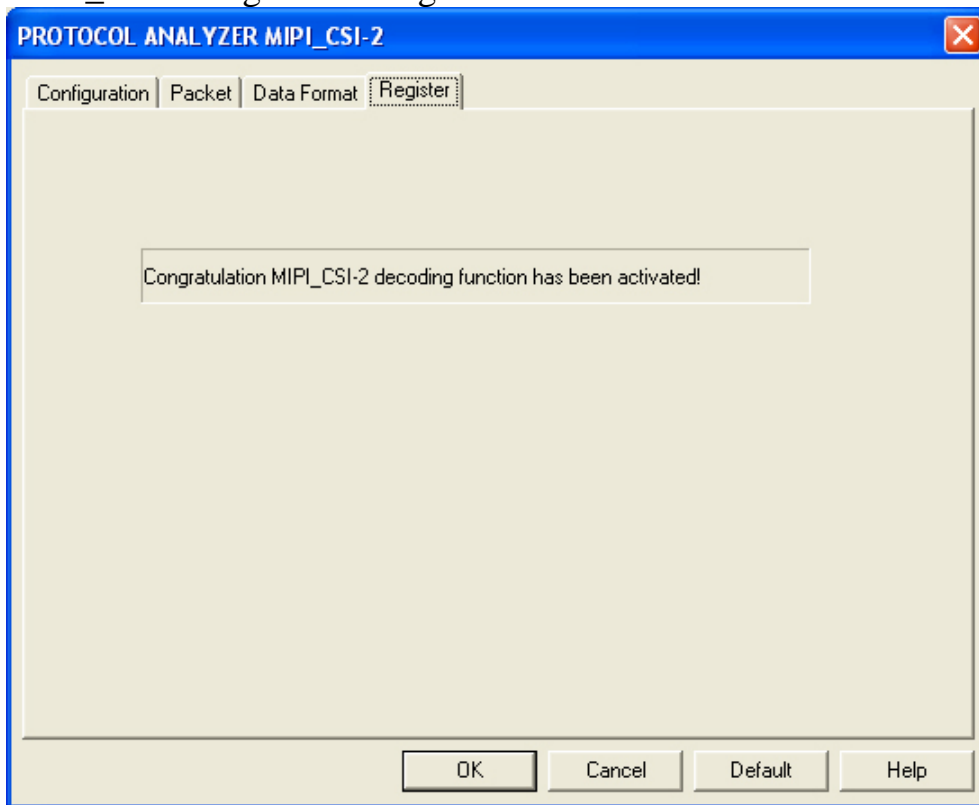
In the Packet dialog box, users can vary the color of items and set the item to be displayed.

## MIPI\_CSI-2 Data Format Dialog Box



Users can set the data formats as their requirements. When selecting the option, **Activate**, the data formats are decided by the settings in the Protocol Analyzer; when not selecting the option, **Activate**, the data formats are decided by the settings in the main program.

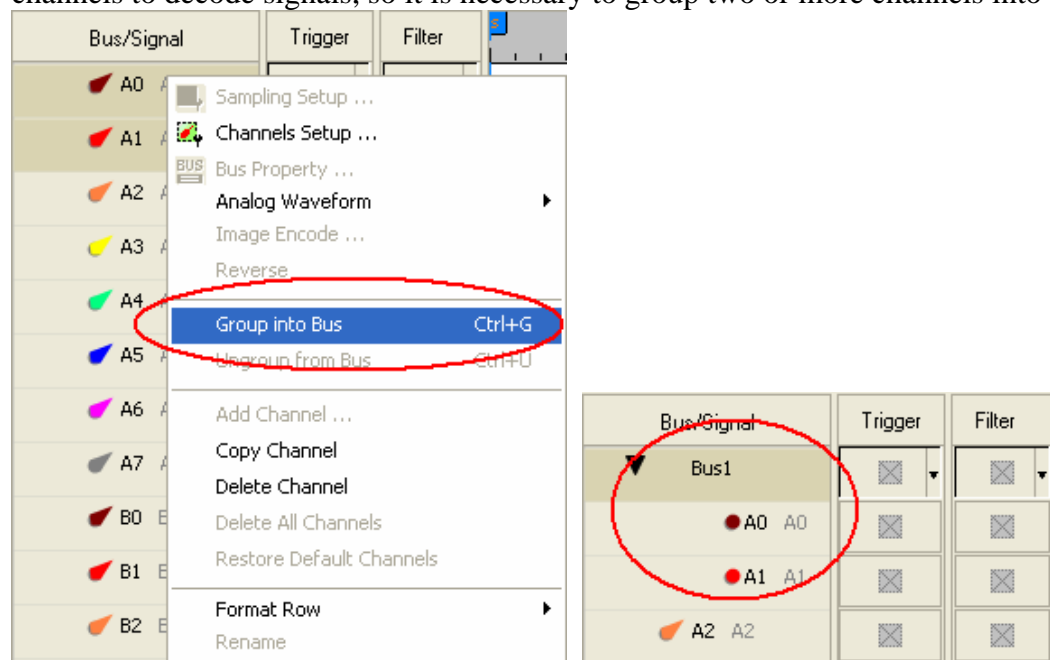
## MIPI\_CSI-2 Register Dialog Box



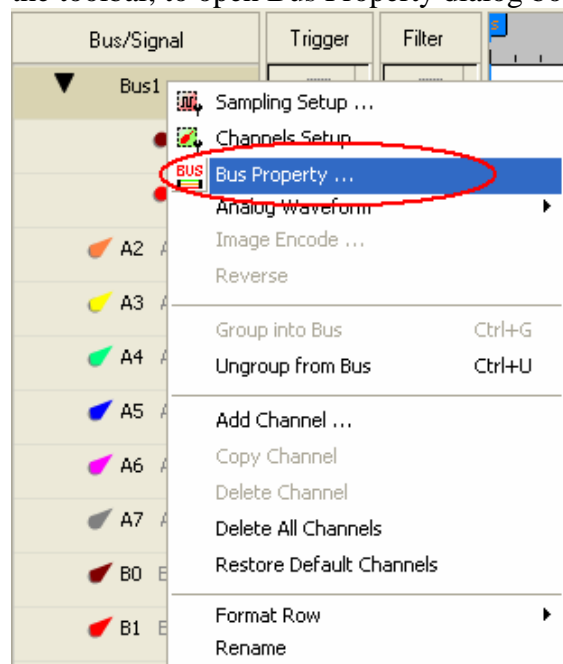


### 3 Operating Instructions

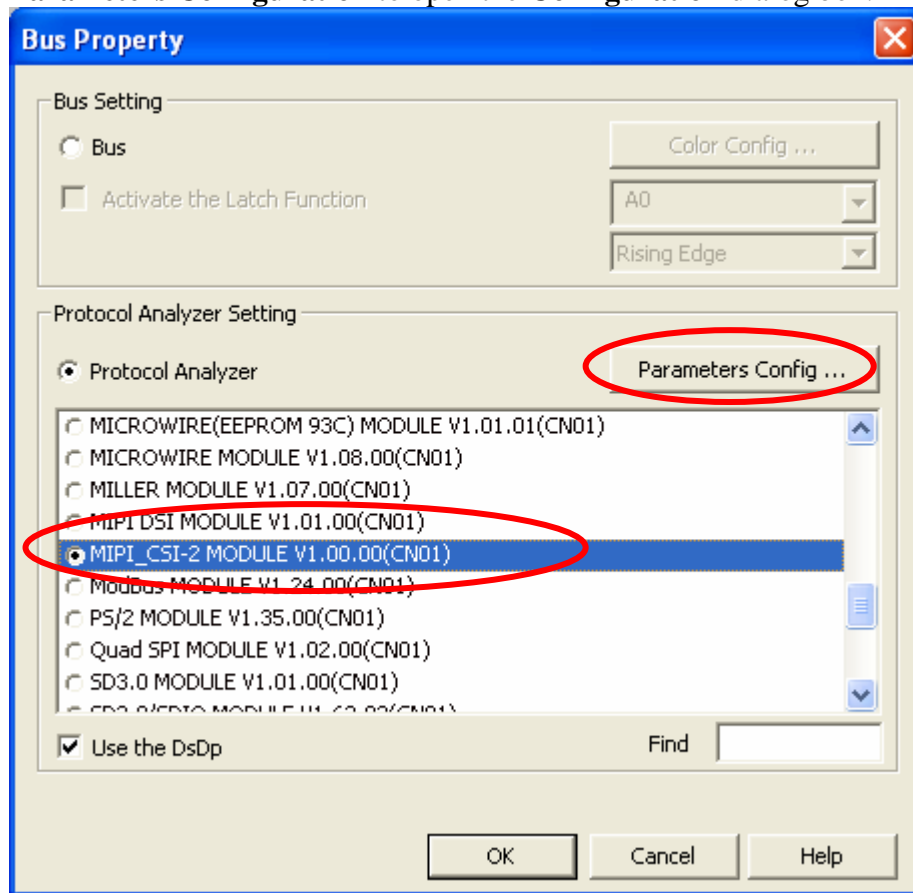
**STEP 1.** Group A0-A1 channels into Bus1 by pressing the Right Key on the mouse. MIPI\_CSI-2 needs two channels to decode signals, so it is necessary to group two or more channels into a Bus.



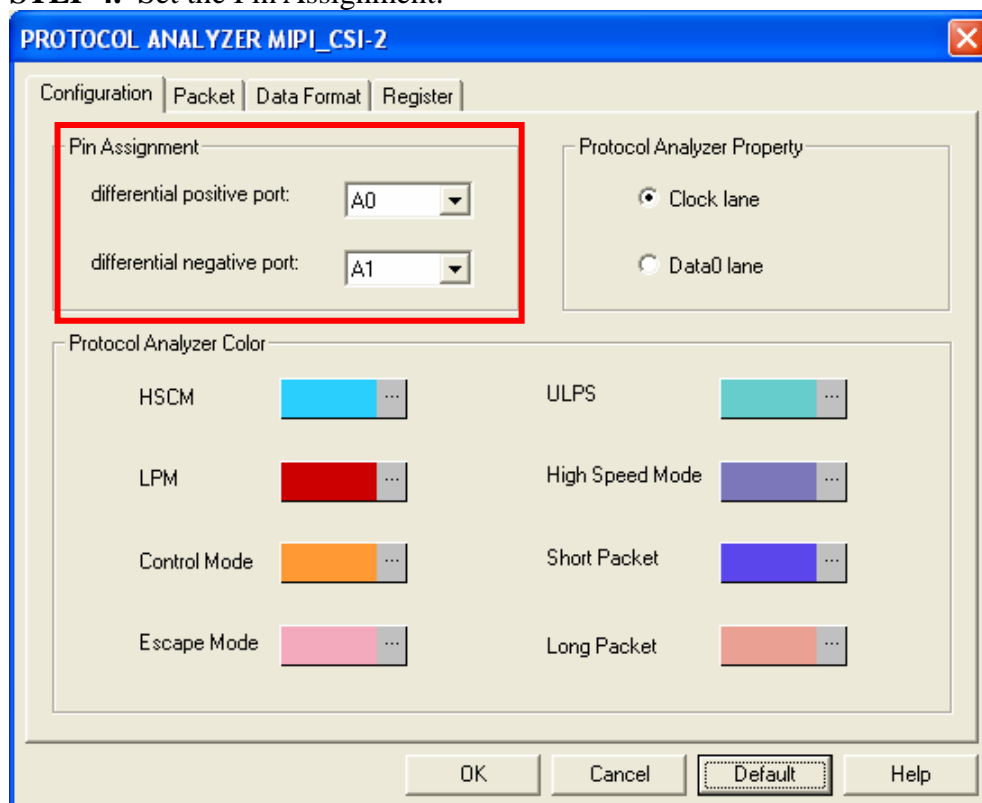
**STEP 2.** Select Bus1, then right click and select Bus Property from the popup menu, or click the Bus icon on the toolbar, to open Bus Property dialog box.



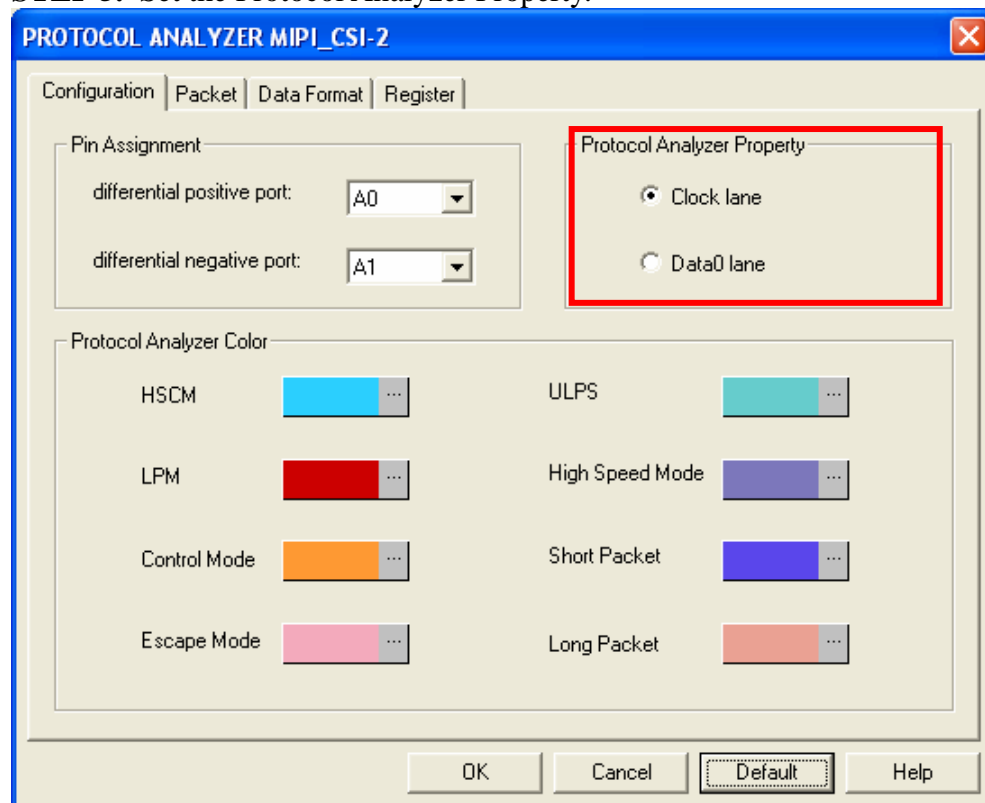
**STEP 3.** Select Protocol Analyzer, and then choose **MIPI\_CSI-2 MODULE V1.00.00(CN01)**. Next click **Parameters Configuration** to open the **Configuration** dialog box.



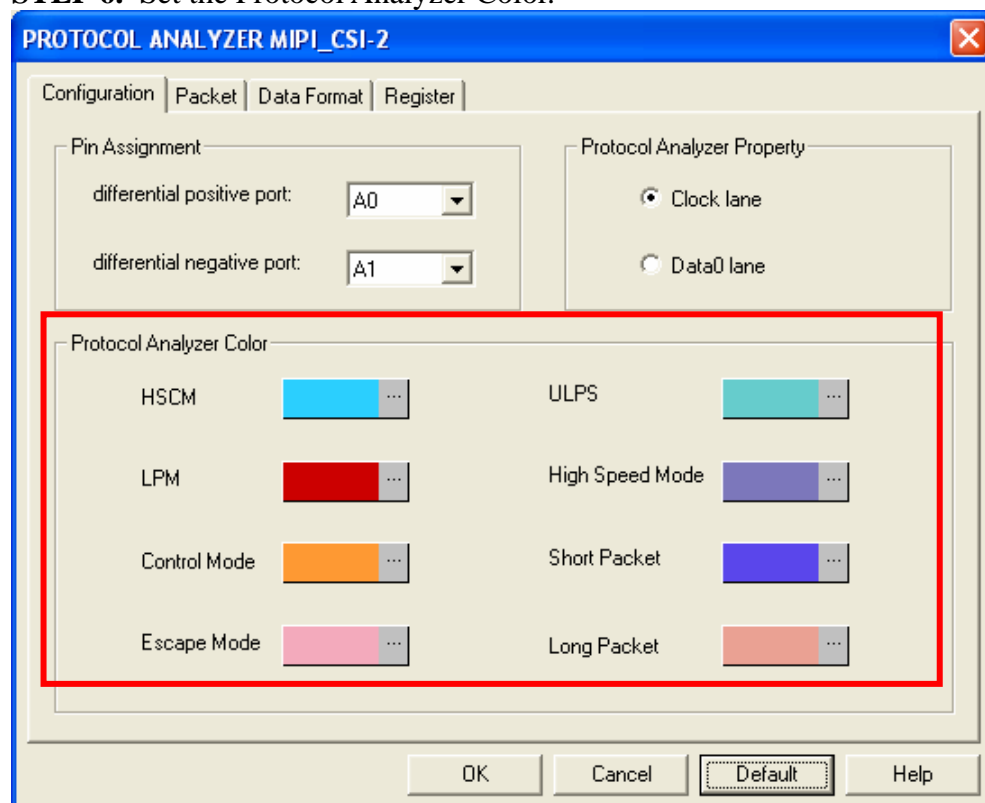
**STEP 4.** Set the Pin Assignment.



**STEP 5.** Set the Protocol Analyzer Property.

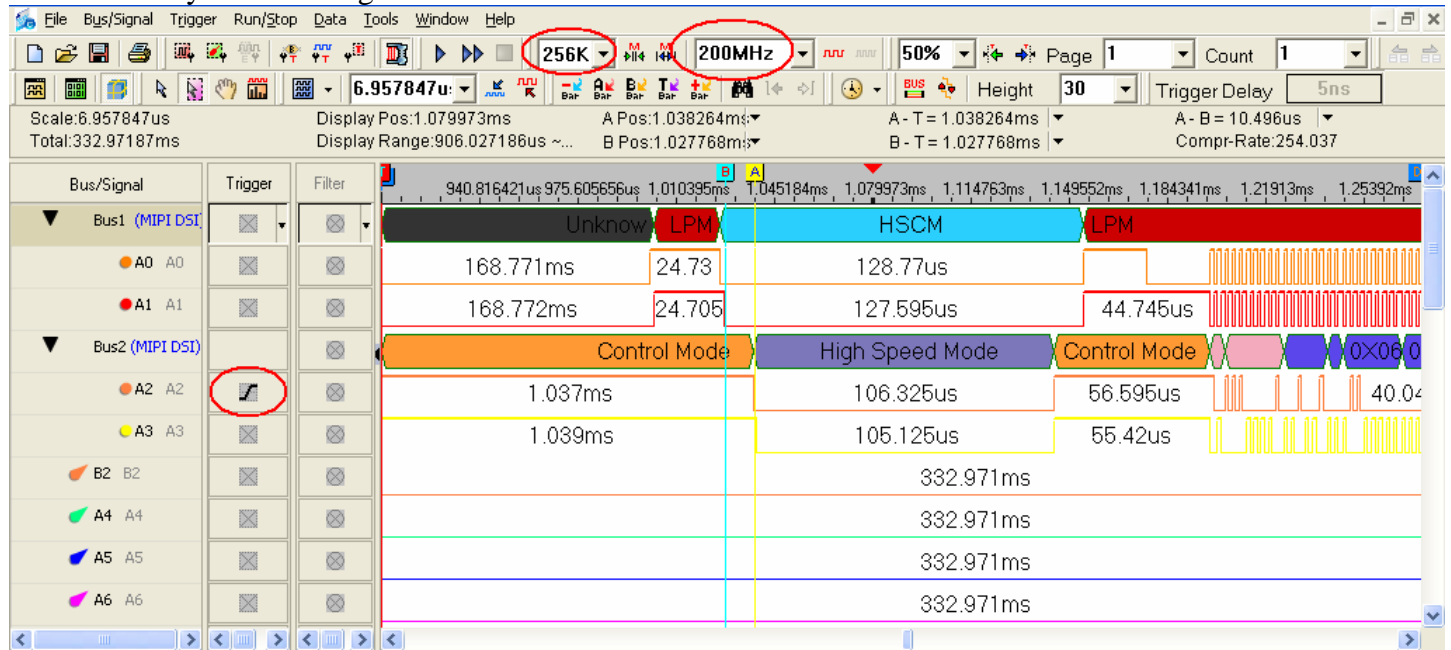


**STEP 6.** Set the Protocol Analyzer Color.



**STEP 7.** Following pictures show the completion of the protocol analyzer decoding and the packet list. The trigger condition is set as Rising Edge; the memory depth is 256K; the sampling frequency is 200MHz (the sampling frequency should be more than ten times higher than the signal to be tested).

## Protocol Analyzer Decoding



## Packet List

